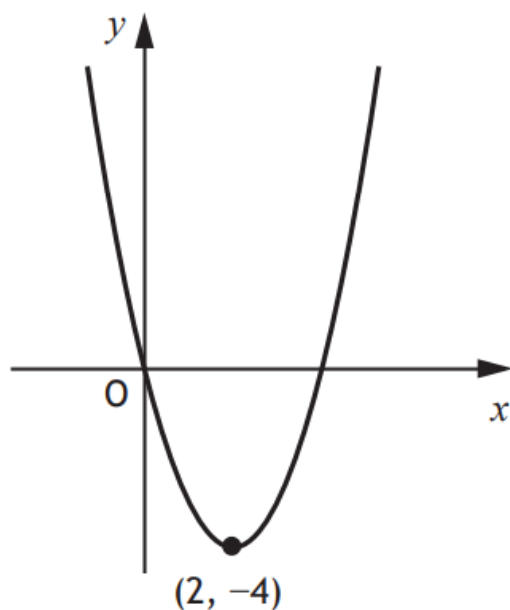




The graph below shows part of the parabola with equation of the form

$$y = (x + a)^2 + b.$$



The minimum turning point $(2, -4)$ is shown in the diagram.

(a) State the values of

(i) a 1

(ii) b . 1

(b) Write down the equation of the axis of symmetry of the graph. 1

Answers:

(a) (i) $a = -2$

(ii) $b = -4$

(b) $x = 2$