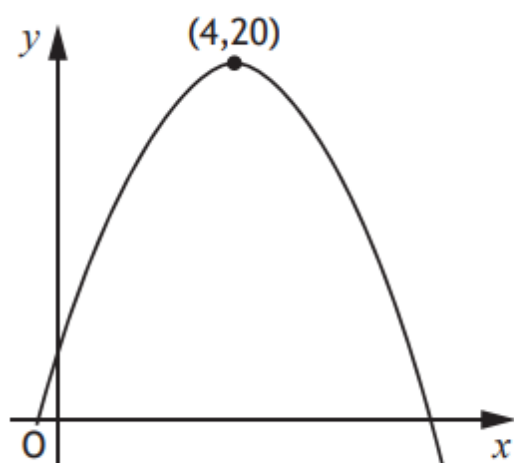




The graph shows a parabola.



The maximum turning point has coordinates  $(4, 20)$  as shown in the diagram.

(a) Write down the equation of the axis of symmetry of the graph. 1

The equation of the parabola is of the form  $y = b - (x + a)^2$ .

(b) State the values of

(i)  $a$  1

(ii)  $b$ . 1

---

Answers:

(a)  $x = 4$

(b) (i)  $-4$

(ii)  $20$