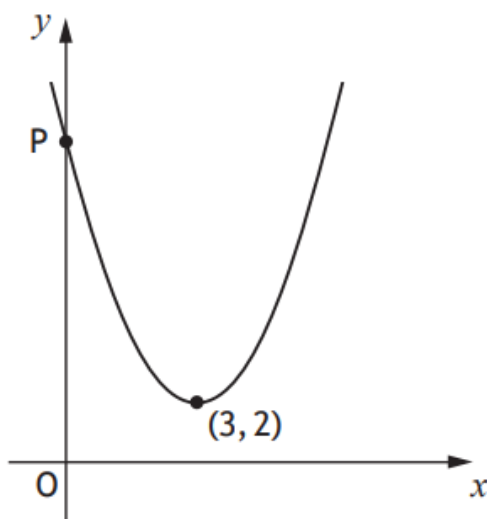




The graph below shows part of a parabola of the form  $y = (x + a)^2 + b$ .



- (a) (i) State the value of  $a$ . 1
- (ii) State the value of  $b$ . 1
- (b) P is the point  $(0, c)$ .  
Find the value of  $c$ . 1

Answers:

- (a) (i)  $-3$   
(ii)  $2$
- (b)  $11$