

Essential Skills 30

The questions in this series of worksheets appear frequently.

These are the GIFTS you must take to succeed

Quadratic Equations (Factorising) (Non Calculator)



Solve:

1. $x^2 + 8x = 0$
2. $2x^2 - x = 0$
3. $x^2 - 25 = 0$
4. $4x^2 - 1 = 0$
5. $x^2 + 4x + 3 = 0$
6. $3x^2 - x - 4 = 0$
7. $5x^2 + 8x - 4 = 0$
8. $3x^2 - 8x - 3 = 0$
9. $10x^2 - 17x + 3 = 0$
10. $20 + 7x - 6x^2 = 0$

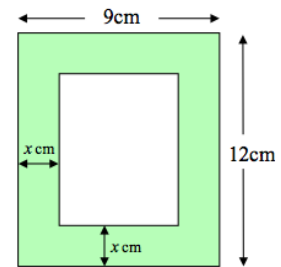
APPLYING QUESTIONS



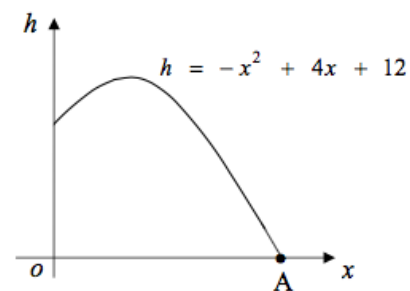
1. Solve $4x(x + 1) = 15$
2. The dimensions of a picture frame are shown:
(a) Show that the area of glass at the centre is

$$A = 4x^2 - 42x + 108$$

- (b) If the area of glass is 54cm^2 , find the value of x .



3.



A rock is thrown from a cliff and makes the shape of a parabola.

- (a) How far will it travel before landing in the water?
(Each unit on the x axis represents 2 metres.)
- (b) What was the maximum height it reached?
(Each unit on the h axis represents 2 metres.)